



Poughkeepsie Rising

Scenic Hudson's Work in Poughkeepsie

Duane Martinez
River Cities Project
Manager

Kate Phipps
Education and Community
Engagement Manager



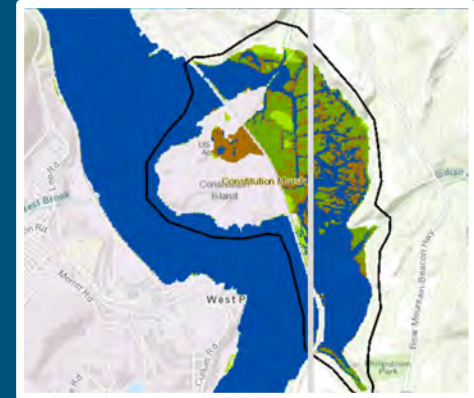
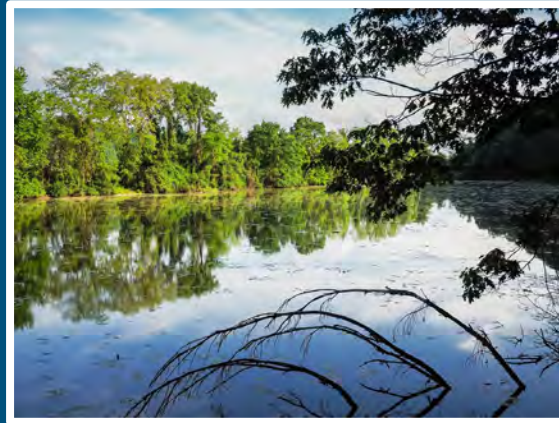
Agenda

- Scenic Hudson history
- Roots and future of our presence in the City of Poughkeepsie
- Scenic Hudson initiatives
 - Fall Kill Creek
 - Dutchess County Urban Trail
 - City of Poughkeepsie Parks



Scenic Hudson

- 1963 Storm King Decision
- Land Conservation
- Advocacy
 - Hudson River PCBs
- Climate, Science and Stewardship
- Community Engagement
- River Cities



Historic work in Hudson Valley Cities

- Saw Mill River, Yonkers



Historic work in Hudson Valley Cities

- Saw Mill River, Yonkers



River Cities Program

Kingston - Newburgh - Poughkeepsie

Start with the premise that an equitable, sustainable, healthy, and livable Hudson Valley must include cities that reflect the voices and visions of their residents .



Working in Community

Scenic Hudson



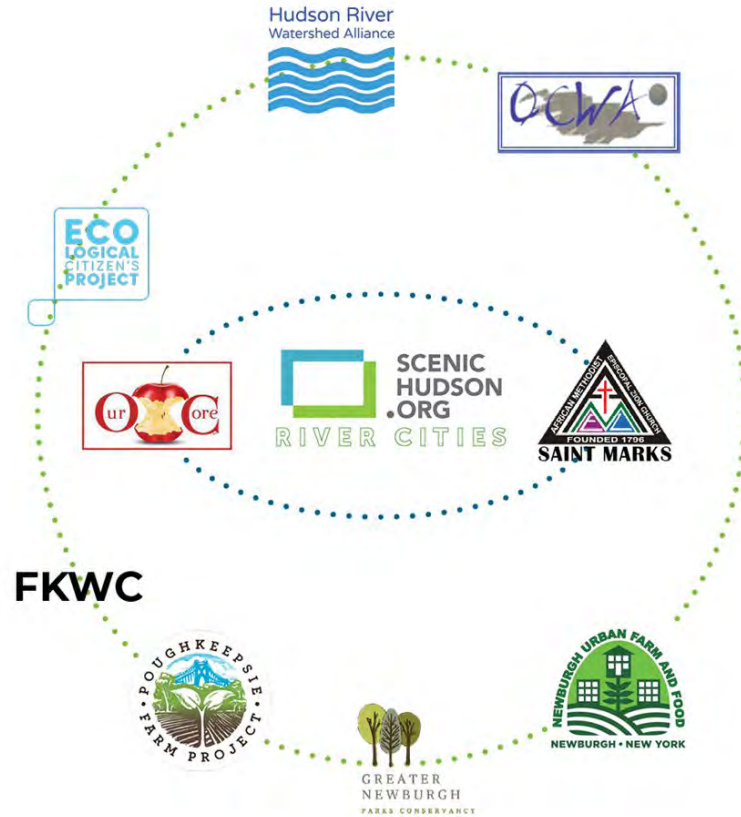
Working in Community

Scenic Hudson
+
Frontline and
grassroots groups



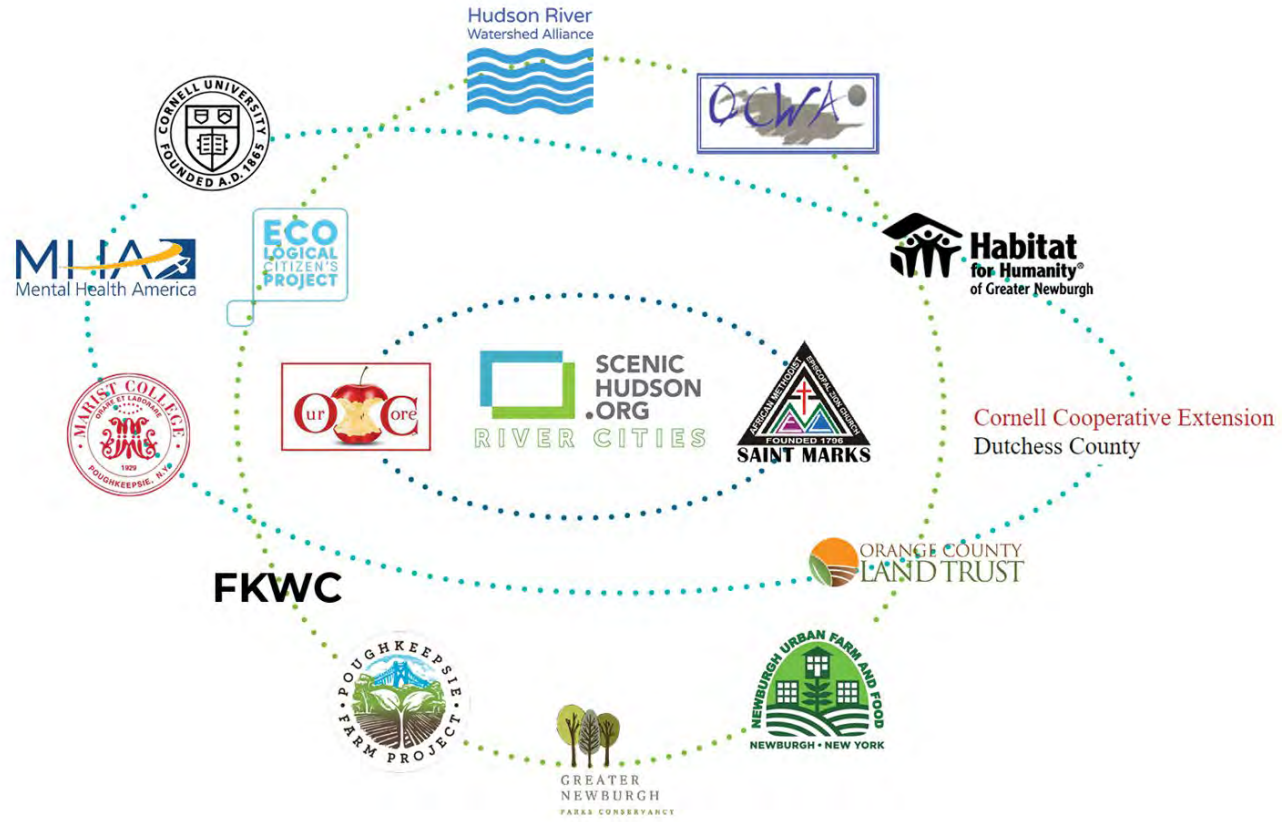
Working in Community

Scenic Hudson
+
Frontline and
grassroots groups
+
Community
Organizations



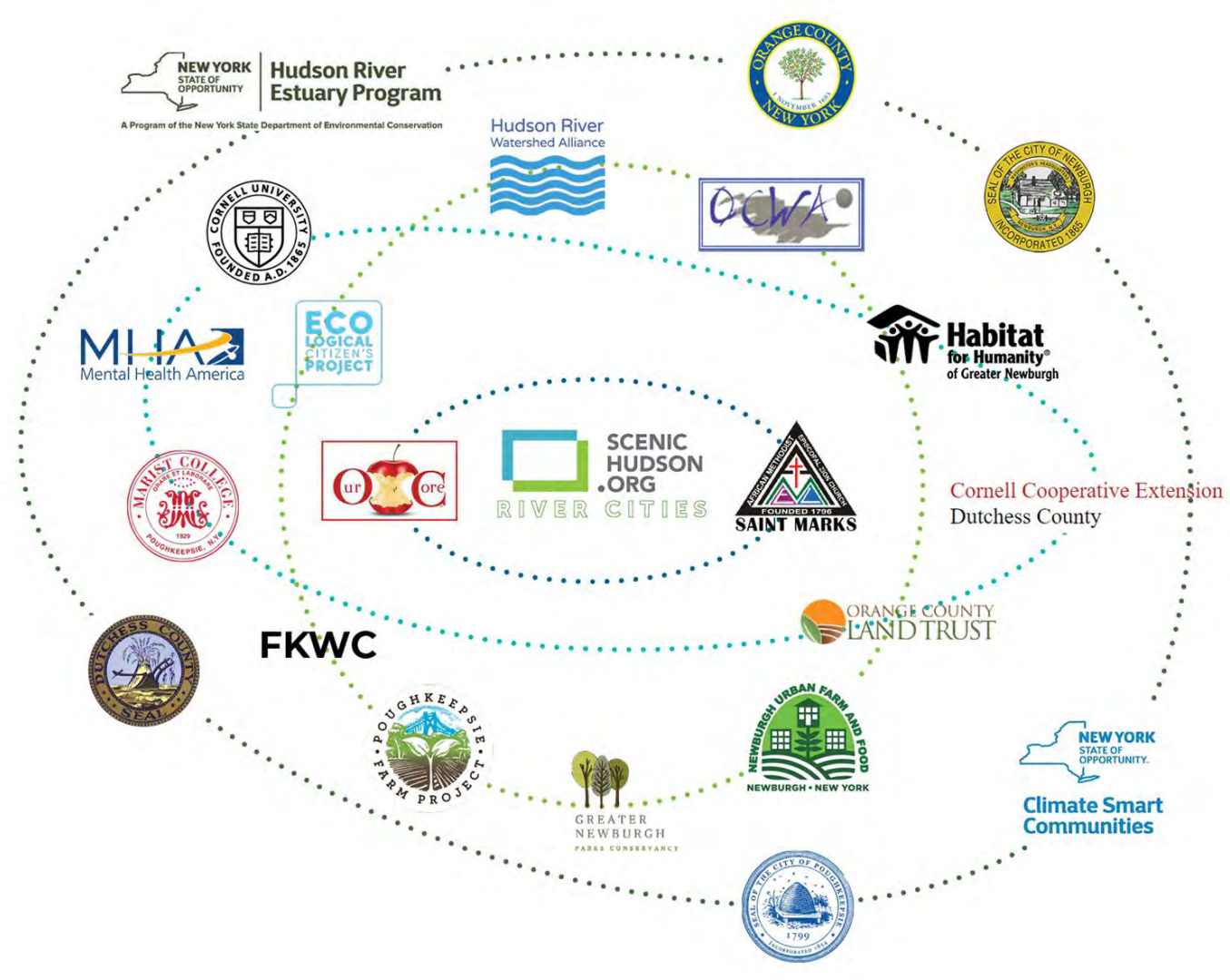
Working in Community

Scenic Hudson
+
Frontline and
grassroots groups
+
Community
Organizations
+
Institutional partners



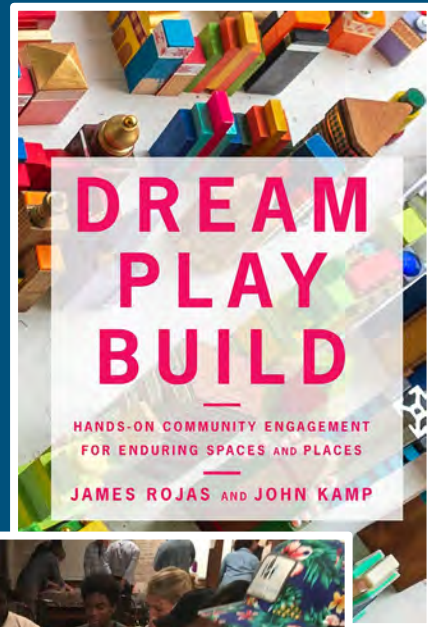
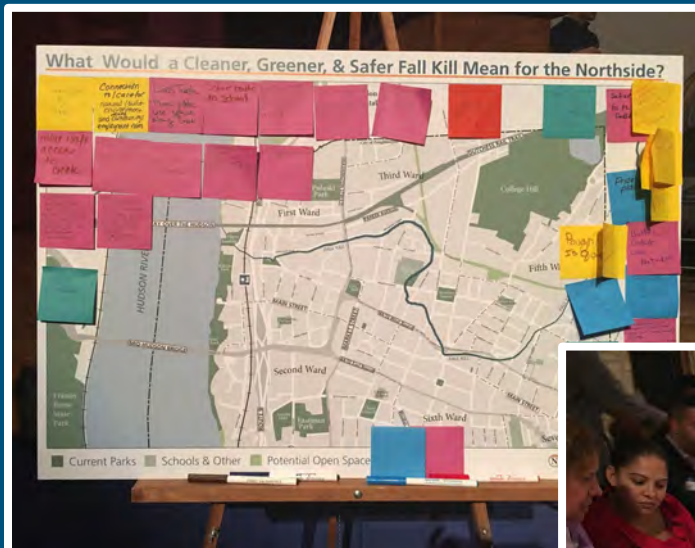
Working in Community

- Scenic Hudson
- + Frontline and grassroots groups
- + Community Organizations
- + Institutional partners
- + Government agencies



Community Engagement

- Listening sessions in 2017
- Connections at community events
- Focus groups in 2021
- Participatory planning and design



Poughkeepsie is homebase

- 1 Civic Center Plaza
- 58 Parker Ave

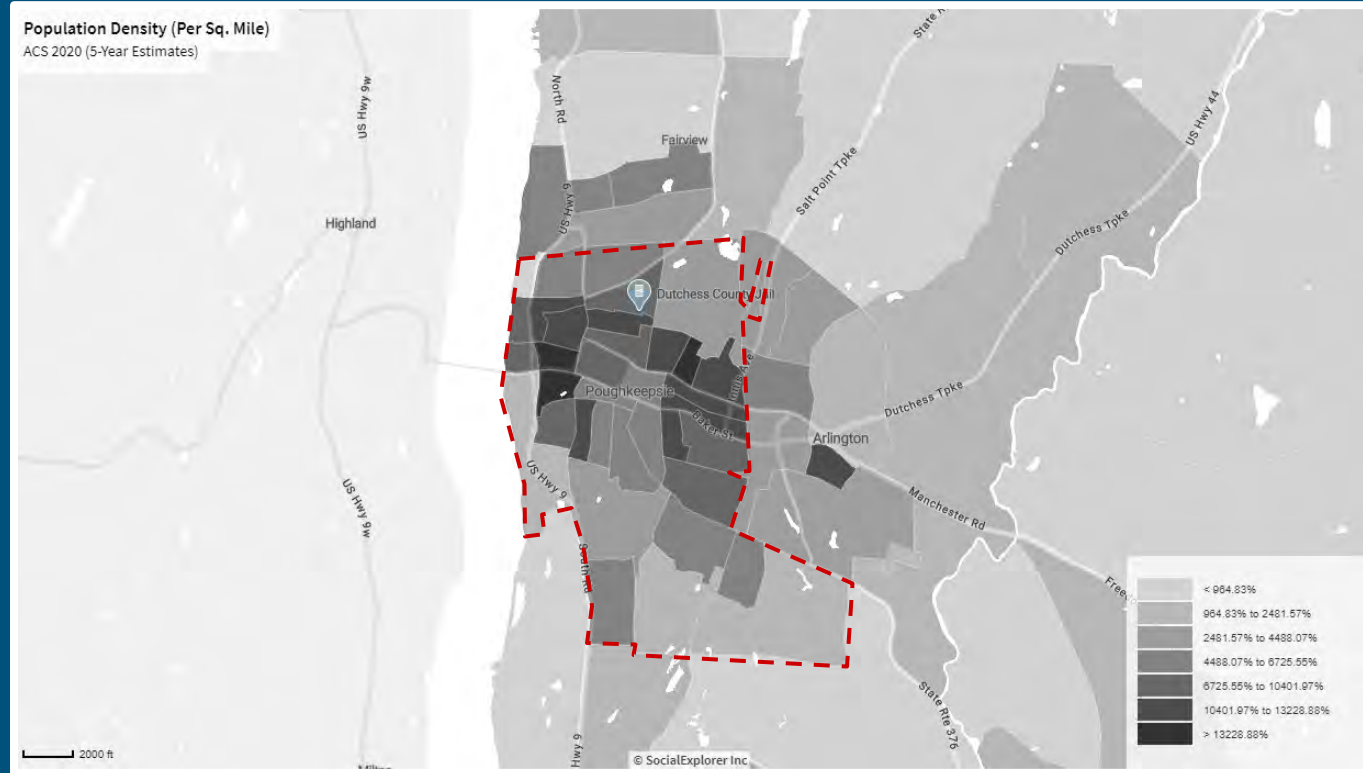




Focus Geography - the Northside

Population
density

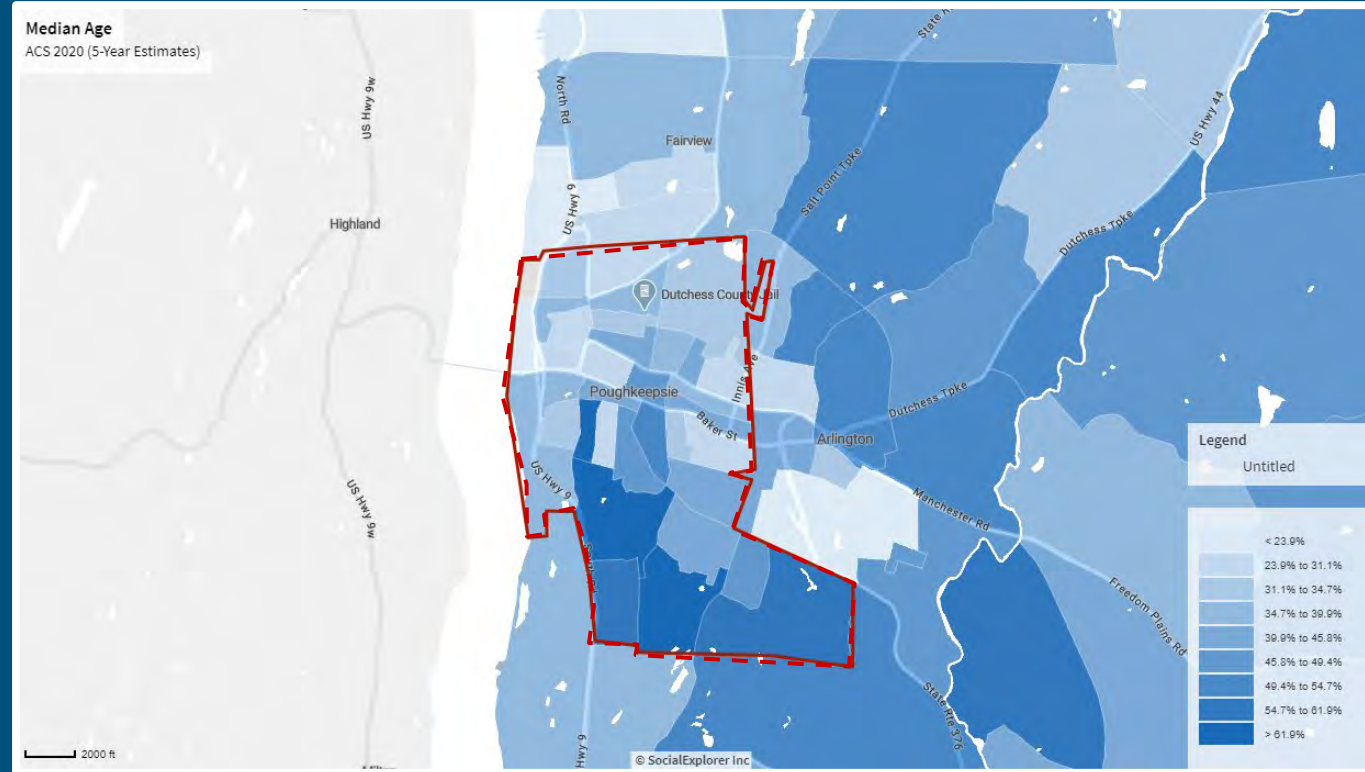
Darker = Denser



Focus Geography - the Northside

Median Age

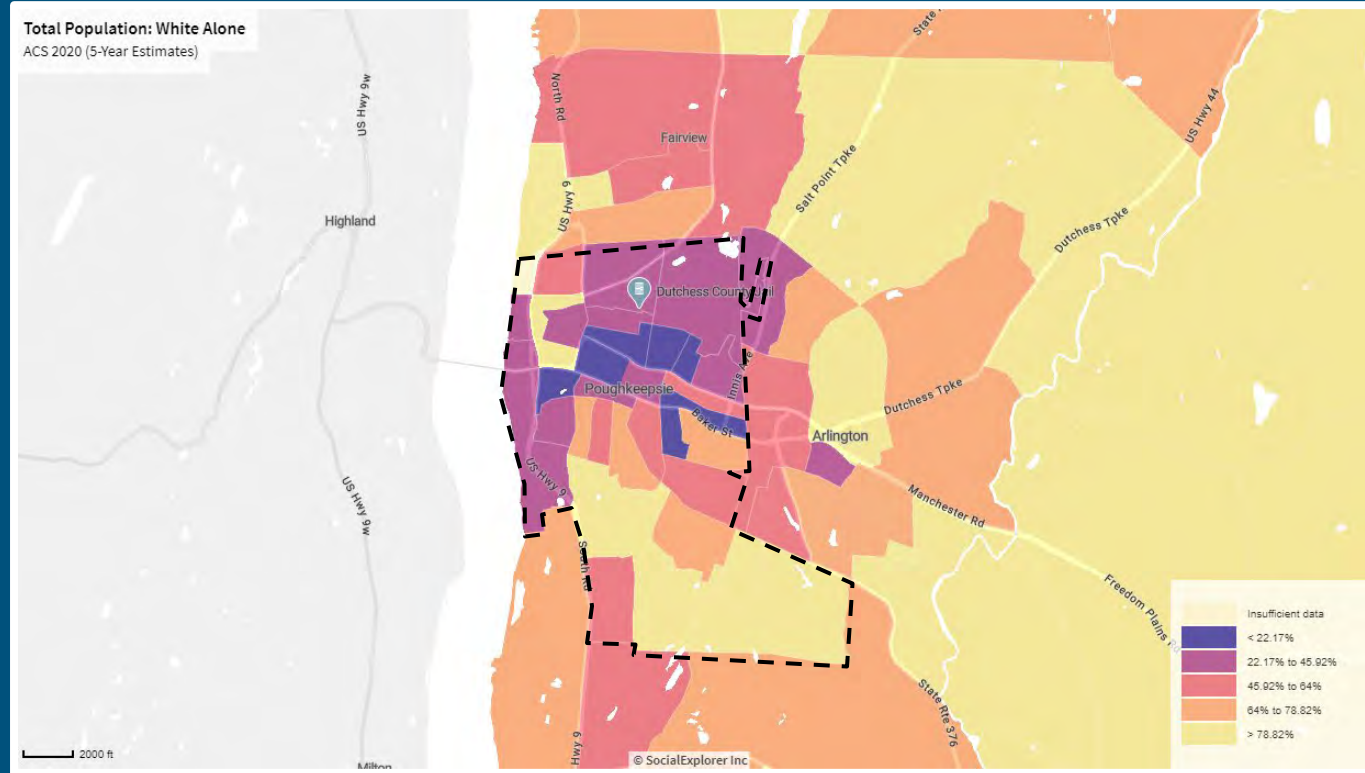
Darker = Older



Focus Geography - the Northside

Race

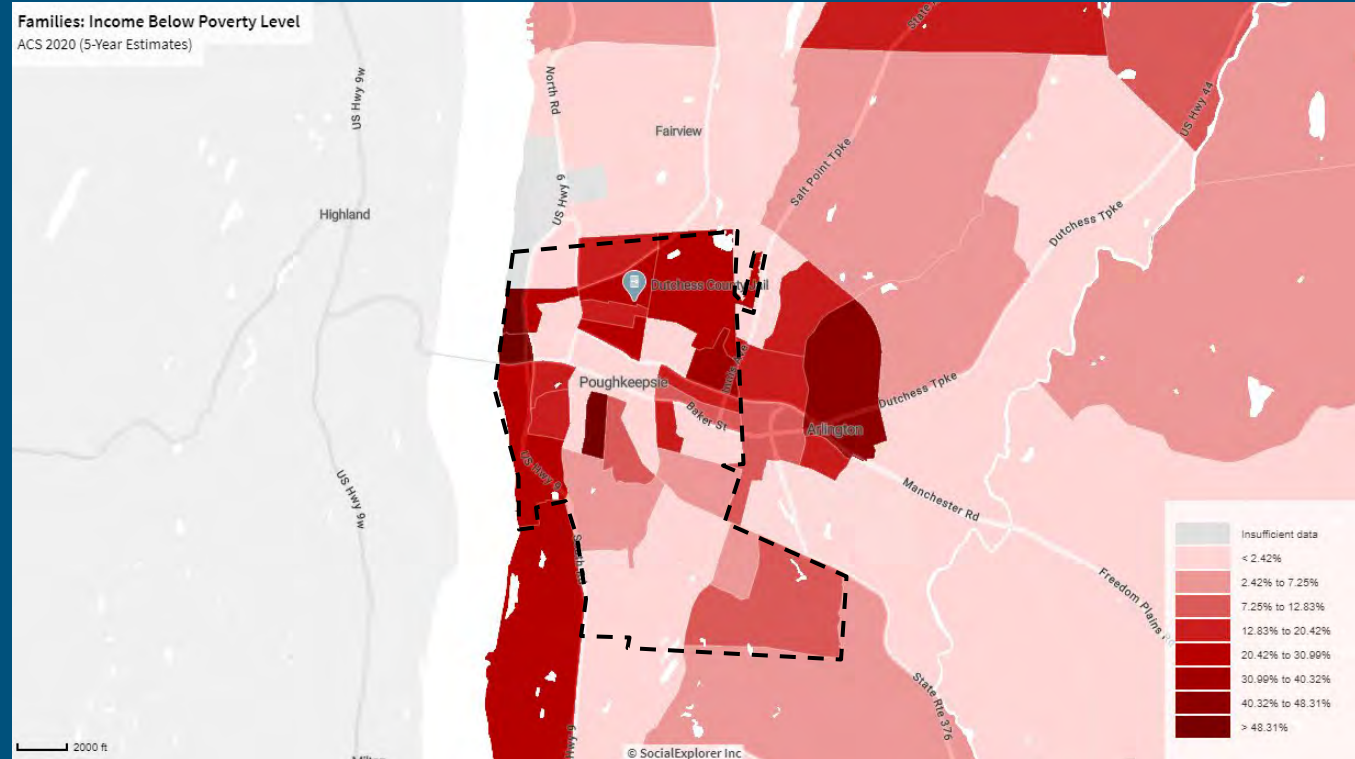
Darker = BIPOC



Focus Geography - the Northside

Family Poverty

Darker = More Households



Focus Geography - the Northside

Walks to work

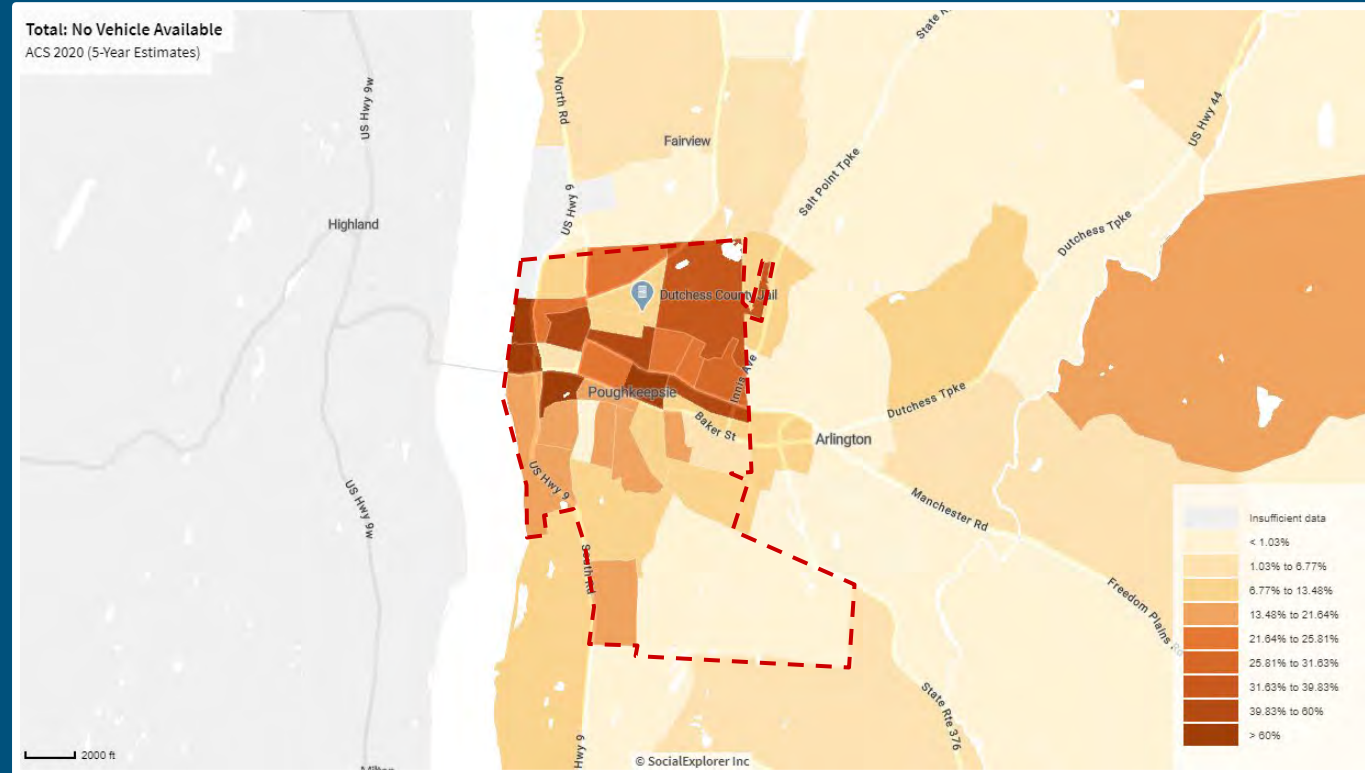
Darker = Higher percentage



Focus Geography - the Northside

No household
vehicle

Darker = Higher
percentage



Climate and Environmental Justice

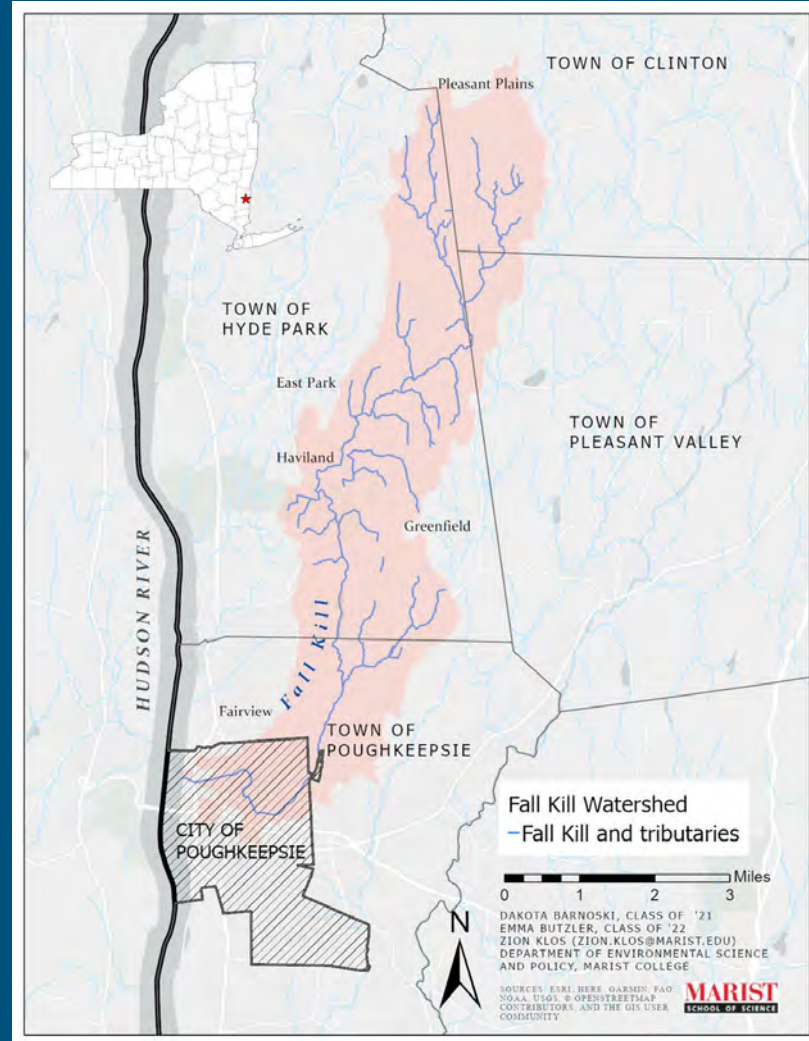
- Listening
- Data
- Education
- Technical Assistance
- Community Organizing
- Participatory Design
- Understanding Disproportionate Harm

CLIMATE CRISIS



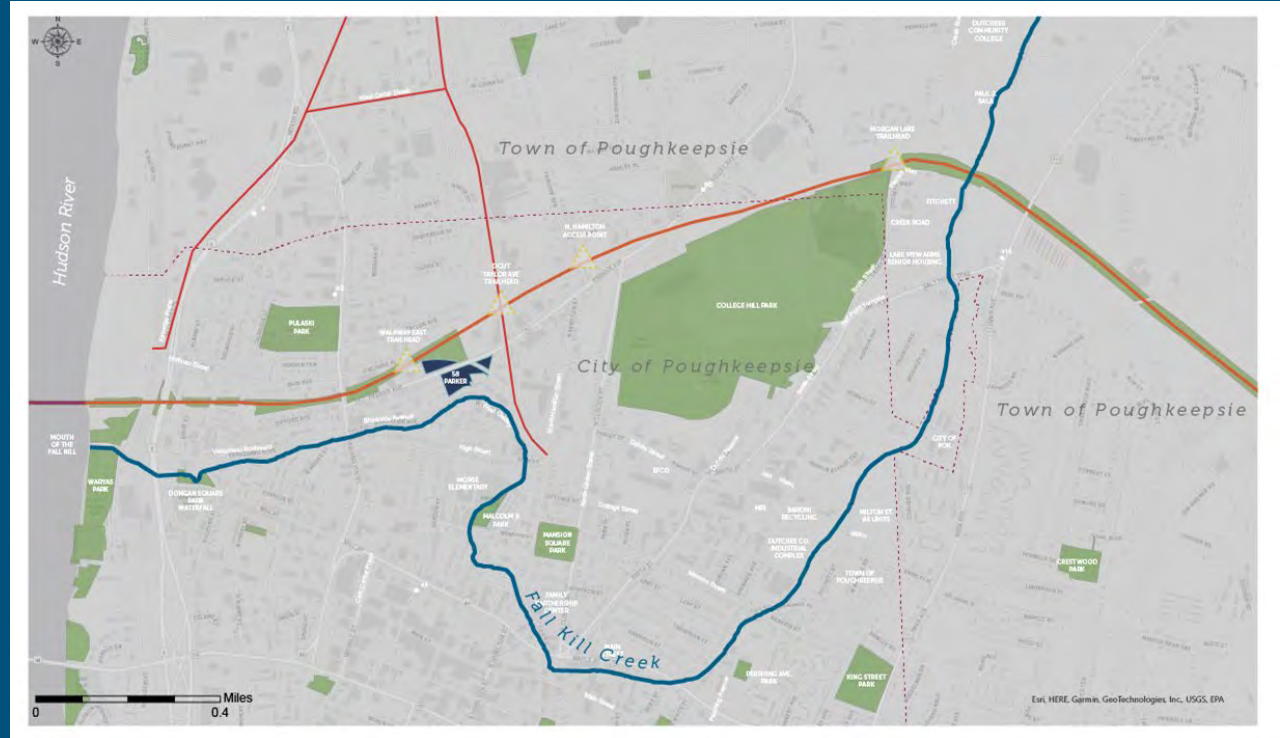
Fall Kill Creek

- 16 miles long
- Watershed covers 19.5 square miles (12,476 acres) of land



Fall Kill Creek

- Key natural asset that frames and organizes our work



Fall Kill Creek



Fall Kill Creek



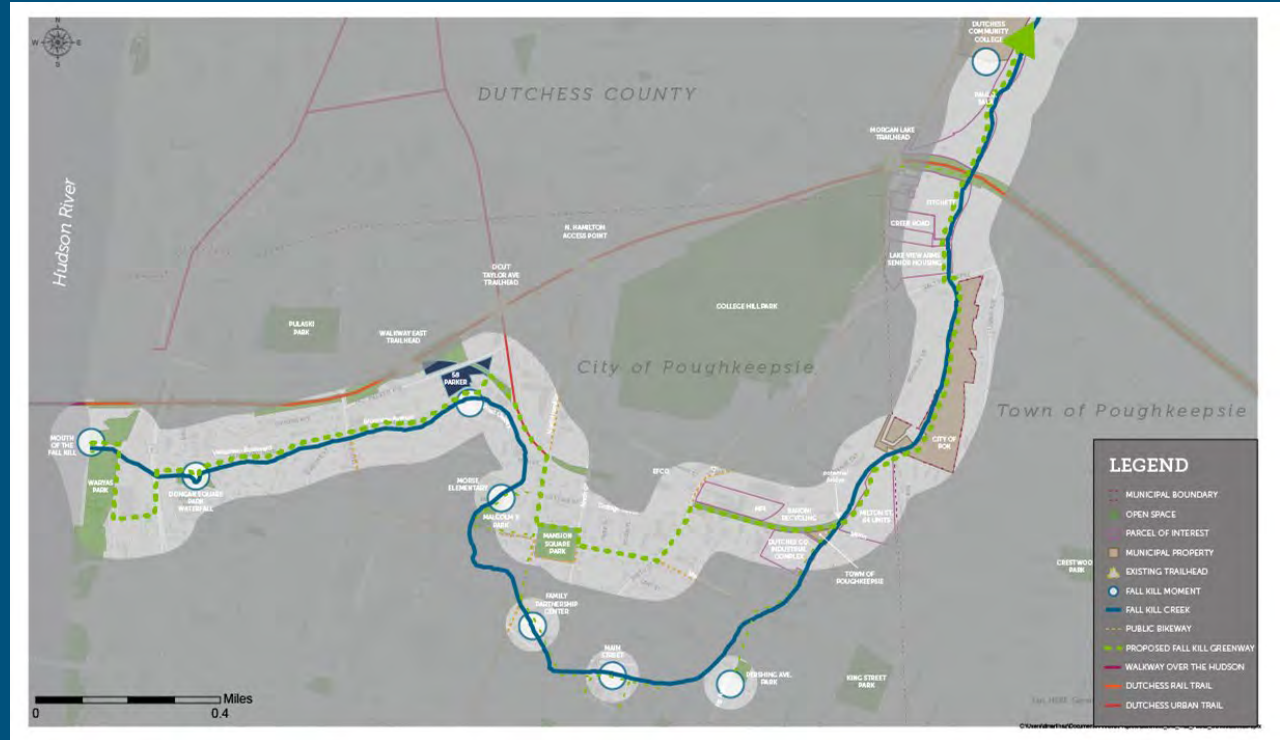
Fall Kill Creek



Fall Kill
AquaBiltz!

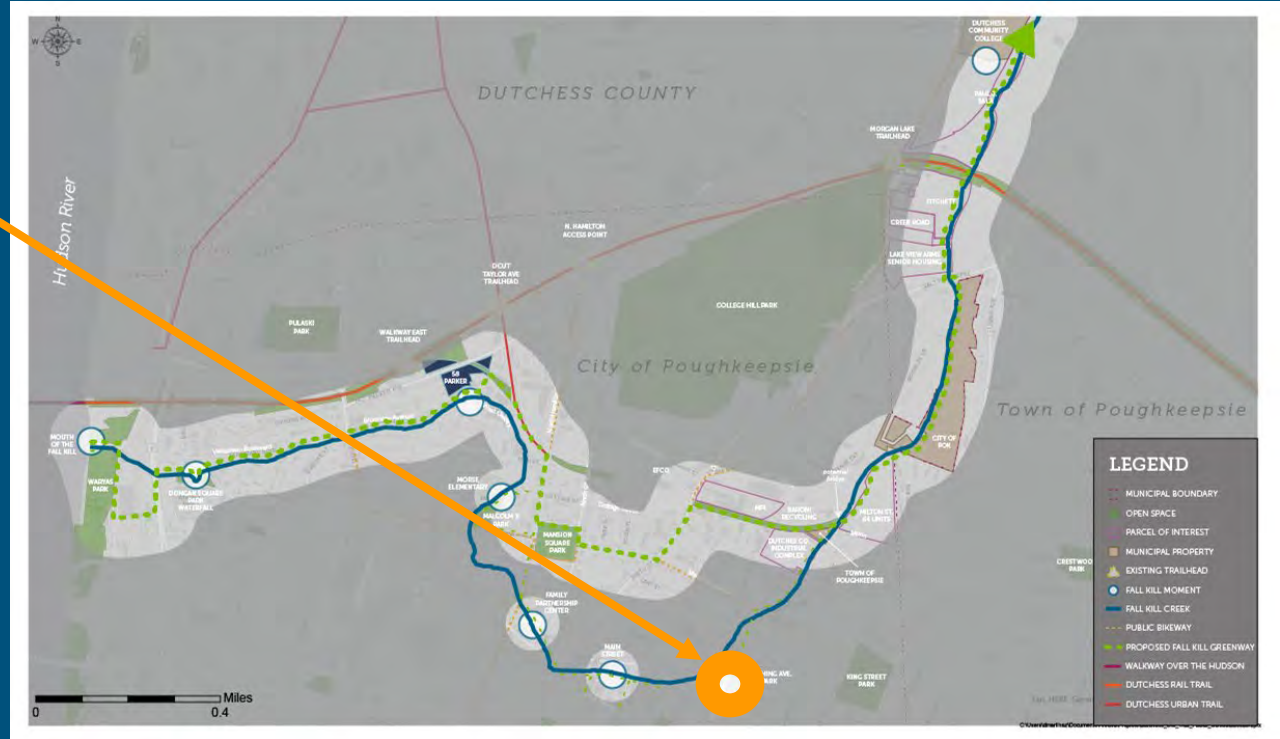
Fall Kill Strategy

- Long envisioned concept
- “Blueway”
- Activating “Moments” along the creek
- Connecting neighborhoods



Rejuvenating City Parks

Pershing Avenue Park and Urban Farm



Rejuvenating City Parks

Pershing Avenue Park
and Urban Farm



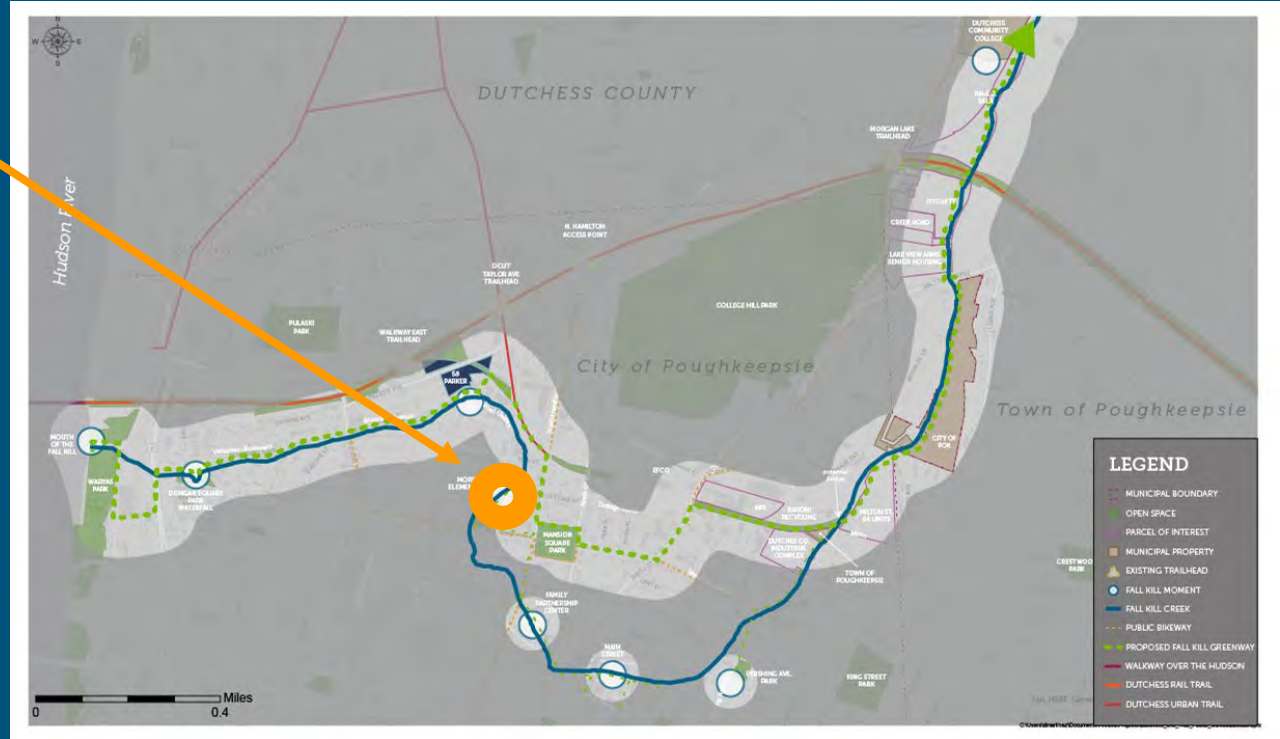
Rejuvenating City Parks

Pershing Avenue Park
and Urban Farm



Rejuvenating City Parks

- Malcolm X Park



Rejuvenating City Parks

Malcolm X Park



Rejuvenating City Parks

Malcolm X Park



Questions?



Contact Information:

Duane Martinez
dmartinez@scenichudson.org

Kate Phipps
kphipps@scenichudson.org